

# ISRAEL

## Administration

Commander-in-Chief of the Israeli Navy:  
Commodore Shlomo Erel.

Naval, Military and Air Attaché in London:  
Brigadier-General Moshé Goren.  
Naval, Military and Air Attaché in Washington:  
Colonel Ram Ron.

Mercantile Marine  
Lloyd's Register of Shipping:  
99 vessels of 548,627 tons gross

## SUBMARINES

### 2 Ex-British "T" Class

Displacement: 1,280 tons standard, 1,505 tons surface (1,700 tons submerged)  
Dimensions: 285 (o.a.)×26×14½ feet  
Tubes: 6—21 inch (4 bow, 2 stern)  
Machinery: Diesels, B.H.P.: 2,500—15.25 kts. surface  
Electric motors, H.P.: 2,900—15 kts. submerged  
Oil fuel: 250 tons  
Complement: 65 officers and ratings

*General*  
Acquired from Great Britain (announced in Nov. 1964). Handed over to Israel after refit in H.M. Dockyard, Portsmouth. *Dakar* means Shark, *Levathan* means Whale.

	Builders	Laid down	Launched	Completed
LEVIATHAN (ex-H.M.S. <i>Turpin</i> )	H.M. DY. Chatham	24 May 1943	5 Aug. 1944	18 Dec. 1944
DAKAR (ex-H.M.S. <i>Totem</i> )	H.M. DY. Devonport	22 Oct. 1942	28 Sep. 1943	9 Jan. 1945



DAKAR

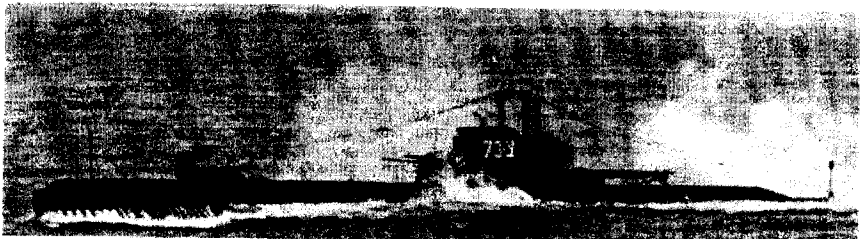
1966, Dr. Giorgio Arra

### 2 Ex-British "S" Class

Displacement: 715 tons standard, 814 tons surface, 1,000 tons submerged  
Dimensions: 202½ (pp.), 217 (o.a.)×23½×10½ (mean) feet  
Guns: 1—4 inch  
Tubes: 6—21 inch  
Machinery: Diesels, B.H.P.: 1,900—14.7 kts. surface  
Electric motors, H.P.: 1,300—9 kts. submerged  
Oil fuel: 70 tons  
Complement: 57 officers and ratings

*General*  
Former British submarines of the "S" class purchased by Israel in Oct. 1958. *Springer* was handed over to the Israeli Navy at Portsmouth on 9 Oct. 1958 and renamed *Tanin* (Crocodile). Both boats were refitted in Great Britain before delivery to Israel in May 1960 (*Rahav*) and Dec. 1959 (*Tanin*). They are reported to be very handy craft, capable of making a "crash dive" in 30 seconds, and both are fitted with "Snort" mast and sonar domes. A photograph of *Tanin* appears in the 1961-62 to 1965-66 editions.

	Pennant No.	Builders	Laid down	Launched	Completed
RAHAV (ex-H.M.S. <i>Sanguine</i> )	73	Cammell Laird & Co. Ltd., Birkenhead	10 Jan. 1944	15 Feb. 1945	13 May 1945
TANIN (ex-H.M.S. <i>Springer</i> )	71	Cammell Laird & Co. Ltd., Birkenhead	8 May 1944	14 May 1945	2 Aug. 1945



RAHAV

1966, Israeli Navy, Official

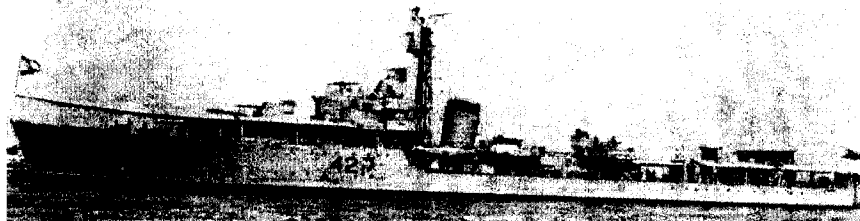
## DESTROYERS

	Pennant No.	Builders	Laid down	Launched	Completed
ELATH (ex-H.M.S. <i>Zealous</i> )	40	Cammell Laird & Co. Ltd., Birkenhead	5 May 1942	28 Feb. 1944	9 Oct. 1944
YAFFO (ex-H.M.S. <i>Zodiac</i> )	42	John I. Thornycroft & Co., Ltd., Southampton	7 Nov. 1942	11 Mar. 1944	25 Oct. 1944

### 2 Ex-British "Z" Class

Displacement: 1,710 tons standard (2,555 tons full load)  
Dimensions: 362 (o.a.)×35½×17 feet  
Guns: 4—4.5 inch d.p., 6—40 mm. AA.  
Tubes: 8—21 inch  
A/S weapons: 4 D.C.T.  
Machinery: Parsons geared turbines, 2 shafts. S.H.P.: 40,000—31 kts.  
Boilers: 2 Admiralty 3-drum type  
Oil fuel: 580 tons  
Radius: 2,800 miles at 20 kts.  
Complement: 250 officers and ratings

*General*  
Purchased from Great Britain. Transferred to Israel on 15 July in Cardiff Docks. Refitted before going to Israel in 1956. *Elath* by Harland & Wolff in Langton Dock, Liverpool, *Yaffo* by Crichtons in Trafalgar Dock, Liverpool. A photograph of *Elath* appears in the 1958-59 to 1964-65 editions.



YAFFO

1964, Israeli Navy, Official

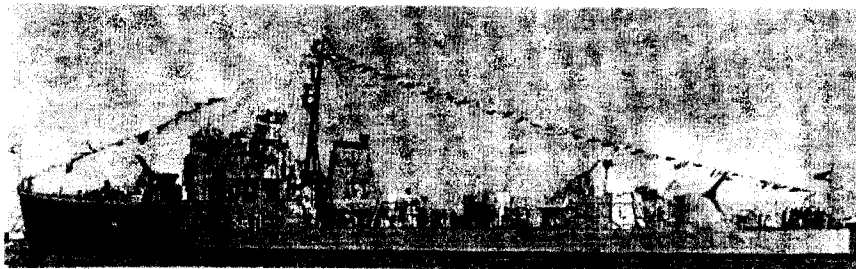
## FRIGATE

	Pennant No.	Builders	Engineers	Laid down	Launched	Completed
HAIFA (ex- <i>Ibrahim el Awal</i> , ex- <i>Mohamed Ali el Kebir</i> , ex- <i>Mendip</i> , ex- <i>Lin Fu</i> , ex- <i>Mendip</i> )	38	Swan, Hunter & Wigham Richardson, Ltd., Wallsend-on-Tyne	The Wallsend Slipway & Engineering Co., Ltd., Wallsend	10 Aug. 1939	9 Apr. 1940	12 Oct. 1940

### 1 Ex-Egyptian "Hunt" Class

Displacement: 1,000 tons standard (1,490 tons full load)  
Dimensions: 273½ (pp.), 280 (o.a.)×29×7½ (mean), 14 (max.) feet  
Guns: 4—4 inch, 2—40 mm. AA., 3—20 mm. AA.  
A/S weapons: 2 D.C.T.  
Machinery: Parsons geared turbines, 2 shafts. S.H.P.: 19,000—25 kts.  
Boilers: 2 of 3-drum type  
Oil fuel: 280 tons  
Radius: 3,000 miles at 14 kts.  
Complement: 190 officers and ratings

*General*  
Former escort destroyer, later reclassified as anti-aircraft frigate, of the British "Hunt" class, Type 1.



HAIFA

1966, Israeli Navy, Official

*History*  
This ship, first named *Mendip*, served with the British Navy from Oct. 1940 until May 1948 when she was transferred to the Chinese Navy and renamed *Lin Fu*. She was returned to the British Navy at Hong Kong a year later and reverted to the name *Mendip*, but was transferred to the Egyptian Navy in Nov. 1949 and was first renamed *Mohamed Ali el Kebir* but was again renamed *Ibrahim el Awal* in 1951. She was captured from Egypt off Haifa by Israeli forces on 31 Oct. 1956 and renamed *Haifa*. She was commissioned for service in the Israeli Navy in Jan. 1957.

**PATROL VESSEL**

**NOGAH** (ex-PC 16)  
 Displacement: 295 tons standard (450 tons full load)  
 Dimensions: 170 (pp.), 173½ (o.a.)×23×10 (max.) feet  
 Guns: 1—4 inch, 1—40 mm. AA., 3—20 mm. AA.  
 A/S weapons: 4 D.C.T.  
 Oil fuel: 60 tons  
 Radius: 5,000 miles at 9 kts.  
 Machinery: 2 diesels, 2 shafts, B.H.P.: 1,764=18 kts.  
 Complement: 70

*General*  
 Former United States patrol vessel (submarine chaser) of the steel hulled PC type.



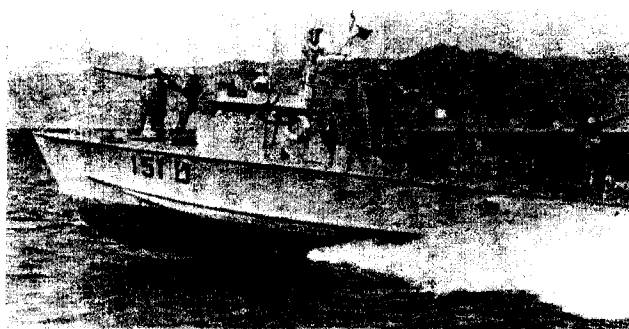
NOGAH

1966, Israeli Navy, Official

**MOTOR TORPEDO BOATS**

<b>OPHIR</b>	<b>SHVA</b>	<b>TARSHISH</b>
Displacement: 40 tons		
Dimensions: 70×17×5 feet		
Guns: 1—40 mm. AA., 2—20 mm. AA.		
Torpedoes: 2—17.7 inch		
Machinery: High octane petrol engines, B.H.P.: 4,000=40 kts.		

*General*  
 Motor Torpedo Boats/Gunboats built for the Israeli Navy by Cantieri Baglietto, Varrazze, Italy, in 1956-57. Pennant Nos. T 150, 151 and 152, respectively.

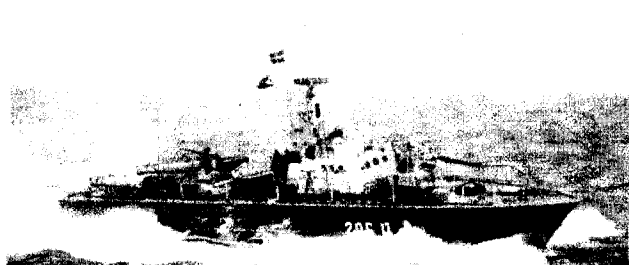


SHVA

1964, Israeli Navy, Official

<b>AYAH</b>	<b>BAZ</b>	<b>DAYA</b>	<b>PERESS</b>	<b>TAHMASS</b>	<b>YASOOR</b>
Displacement: 62 tons standard					
Dimensions: 85½ (o.a.)×20½×5 feet					
Guns: 1—40 mm., 4—20 mm. AA.					
Torpedoes: 2—17.7 inch					
Machinery: 2 Napier Deltec diesels, 2 shafts, B.H.P.: 4,600=42 kts.					
Radius: 600 miles at 29 kts.					
Complement: 15 (1 officer, 13 men)					

*General*  
 Built by Chantiers de Meulan, France. Launched in 1950-56. Pennant Nos.: T 200, 201, 202, 203, 204, 205. Photographs appear of T 208 in the 1953-54 to 1957-58 editions, of T 207 in the 1953-54 to 1960-61 editions, and of Peress in the 1961-62 to 1964-65 editions.



TAHMASS

1965, Israeli Navy, Official

<b>LILITT</b>	<b>SHALDAGG</b>	<b>TINSHEMETT</b>
Displacement: 43 tons standard		
Dimensions: 70×19×5 feet		
Guns: 1—40 mm., 2—20 mm. AA.		
Tubes: 2—18 inch		
Machinery: 3 Packard engines, B.H.P.: 4,050=40 kts.		
Radius: 600 miles at 15 kts.		
Complement: 16		

*General*  
 Motor torpedo boats purchased in Great Britain. Built by Vosper, Ltd., Portsmouth, England, in 1942. Pennant Nos.: T 209, T 210, and T 212.

**COAST GUARD CUTTERS**

<b>YARDEN 42</b>	<b>YARKON 44</b>
Displacement: 96 tons standard (109 tons full load)	
Dimensions: 100×20×6 feet	
Guns: 2—20 mm. AA.	
Machinery: Diesels, 2 shafts, Speed 22 kts.	
Complement: 16	

*General*  
 Coastguard cutters. Both built by Yacht & Bootswerft, Burmester Burg, Germany. Yarkon was launched on 25 July 1956 and Yarden (Pennant No. 42) in 1957. A photograph of Yarden appears in the 1961-62 to 1965-66 editions.



YARKON

1966, Israeli Navy, Official

**SEAWARD PATROL CRAFT**

<b>DROR</b> (ex-M 21)	<b>SAAR</b> (ex-M 35)	<b>TIRTSA</b>
Displacement: 46 tons standard (54 tons full load)		
Dimensions: 72 (o.a.)×16×5½ feet		
Guns: 2—20 mm. AA.		
A/S weapons: 8 D.C.		
Machinery: 2 diesels, 2 shafts, B.H.P.: 320=12 kts.		
Complement: 12		

*General*  
 Former British harbour defence motor launches. Built in Great Britain in 1943.  
*Disposal*  
 The former British Fairmile "B" type motor launch Haportzim was officially deleted from the Navy list in 1961.

The former United States coast guard cutter Matzpen of the sloop type, formerly employed as a training ship and later as a depot ship, was sold for scrap in 1962.



TIRTSA

Israeli Navy, Official

**LANDING CRAFT**

<b>LCI</b>	Displacement: 230 tons standard (387 tons full load)
	Dimensions: 159×23×5½ feet
	Machinery: 2 diesels, B.H.P.: 1,320=14.4 kts.

*General*  
 Former United States vessels of the LCI (Landing Craft Infantry) type.

<b>LCT</b>	Displacement: 143 tons standard (309 tons full load)
	Dimensions: 120×33×4 feet
	Machinery: 3 diesels, B.H.P.: 675=10 kts.

*General*  
 Reported to be a mixed flotilla of ex-U.S. landing craft, including ex-U.S.S. 640 and ex-U.S.S. 673, Siebel Ferrys, and ex-British vessels of the LCT (6) type.



LCI type

1956, Israeli Navy, Official

<b>LCM</b>	Displacement: 22 tons standard (60 tons full load)
	Dimensions: 50×14×3½ feet
	Machinery: 2 diesels, B.H.P.: 450=11 kts.

*General*  
 Former United States vessels of the LCM (Landing Craft Mechanised) type.



LCM

1966, Israeli Navy, Official